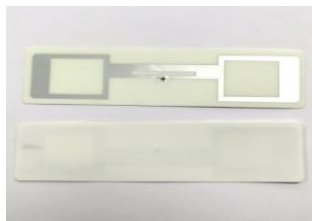


普通可打印超高频标签

**General Printable UHF Tag**

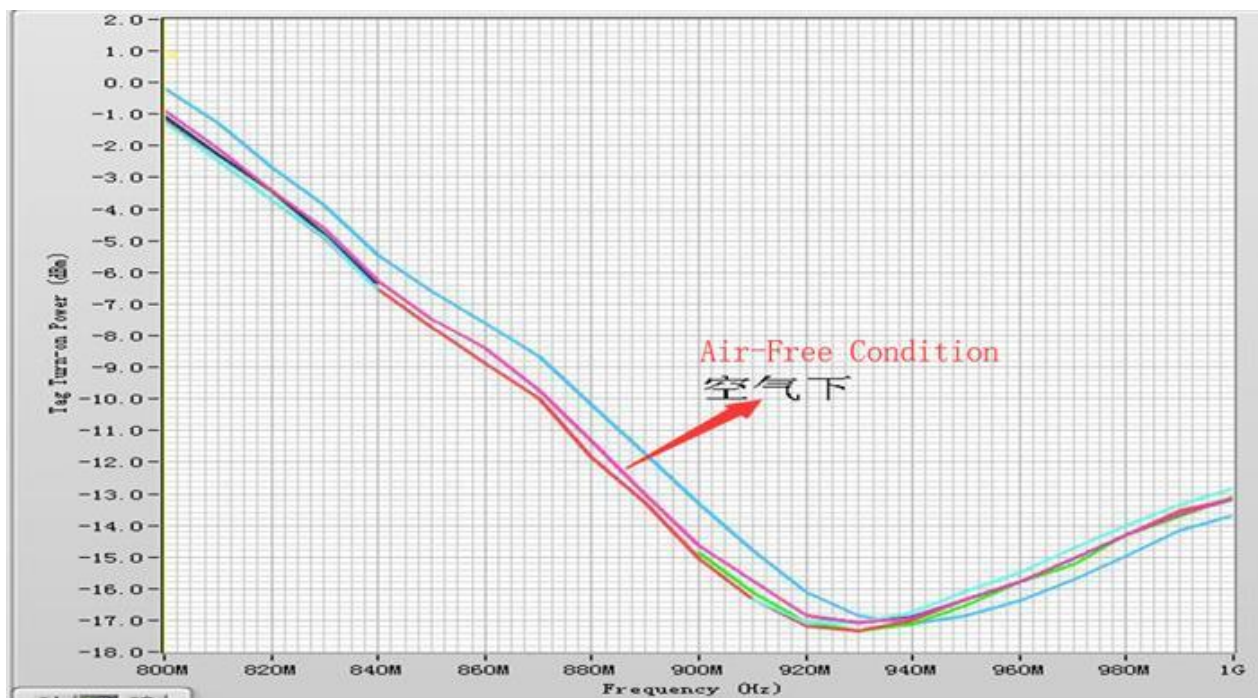


**基本参数/Basic Parameters**

尺寸/Size (L/OD x W/ID x H)	98*24*0.1mm(ID & OD圆形内外径/ID & OD means inner & outer diameter of round tag)
面材封装/FaceStock or Housing	可打印PP材料/White Printable PP
安装方法/Installation	胶粘/Adhesive
天线工艺/Antenna Type	铝天线/Aluminum Antenna
技术/Technology	平面微带/Microstrip Flat Style
离型纸/Backing Liner	无/None
特征/Characters	普通(General)

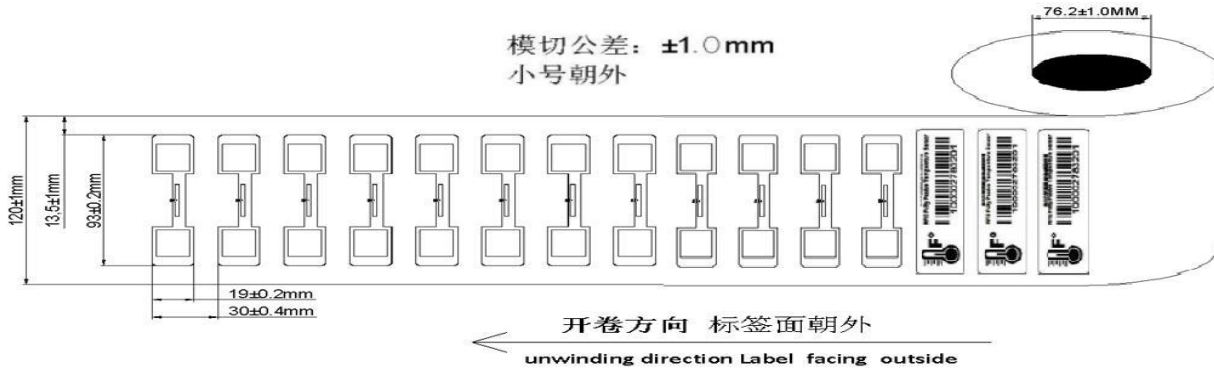
**产品特性/Product Feature**

芯片/Chip Model	CAB1/VBL7
协议/Protocol	ISO18000-6C GEN2 V2
频率范围/Operating Frequency	902-928Mhz
内存/Memory	TID/UID 112bit+ EPC/Block 192bit+ User File_0 with 512bit of data+ Reserve 112bit
读距/Reading Range	600cm (depends on reader)
应介质/Applicable Surface	空气(Air-free)
个性化选项/Option	定制彩色印刷条码文本或个性化编码Custom color printing(Embossing or laser-engraving) with barcode or text & personalization encoding
附加说明/Additional	温度测量范围/Temperature Measure: -40C - 85C, 测量精度/Temperature Accuracy: ±0.5C (Typical)/± 0.1°C(Specific Calibration)



**供货方式/Delivery & Supply Format**

卷料供货每卷1000-3000片 Supply in roll with 1000-3000PCS/Roll



**应用场景/Application**

冷链管理标签主要应用于农产品、生鲜、活体供应链，冷链，以集装箱，物流配送，快递运输为主要群体，等过程中的食品/药品/生鲜物品产品标识、温度检测，方便质量跟踪和溯源监管。Cold Chain Management tag is widely used for items identification during the transportation, supply chain, Cold chain, Container, Logistics, cargo shipment, especially monitoring temperature control quality of food, medicine, pharmacy, fresh items in sight, outgoing quality management, source traceability & supervision management and so on.



**环境参数/Environmental Parameter**

数据保存/Data EEPROM Retention	10years
静电保护/ESD Limited Voltage	2KV
工作温度/Operating Temperature	-35 $^{\circ}$ C - 85 $^{\circ}$ C
储存温度/Storage Temperature	0 $^{\circ}$ C - 25 $^{\circ}$ C
操作湿度/Relative Humidity	10%-95%(Variant Performance)

**兼容打印机/Compatible Printers**

佐藤/SATO	CL4NX
斑马/Zebra	ZT411RFID
博思得/POSTEK	TX Series
东芝/TOSHIBA	SX-4T SX-5T

**NOTE:**The specification is subject to change without prior notice

批准 Approved By:                      制作审核 Prepared & Checked By: 林鸿伟  
日期 Date: 2020/08/21                      日期 Date: 2020/10/31